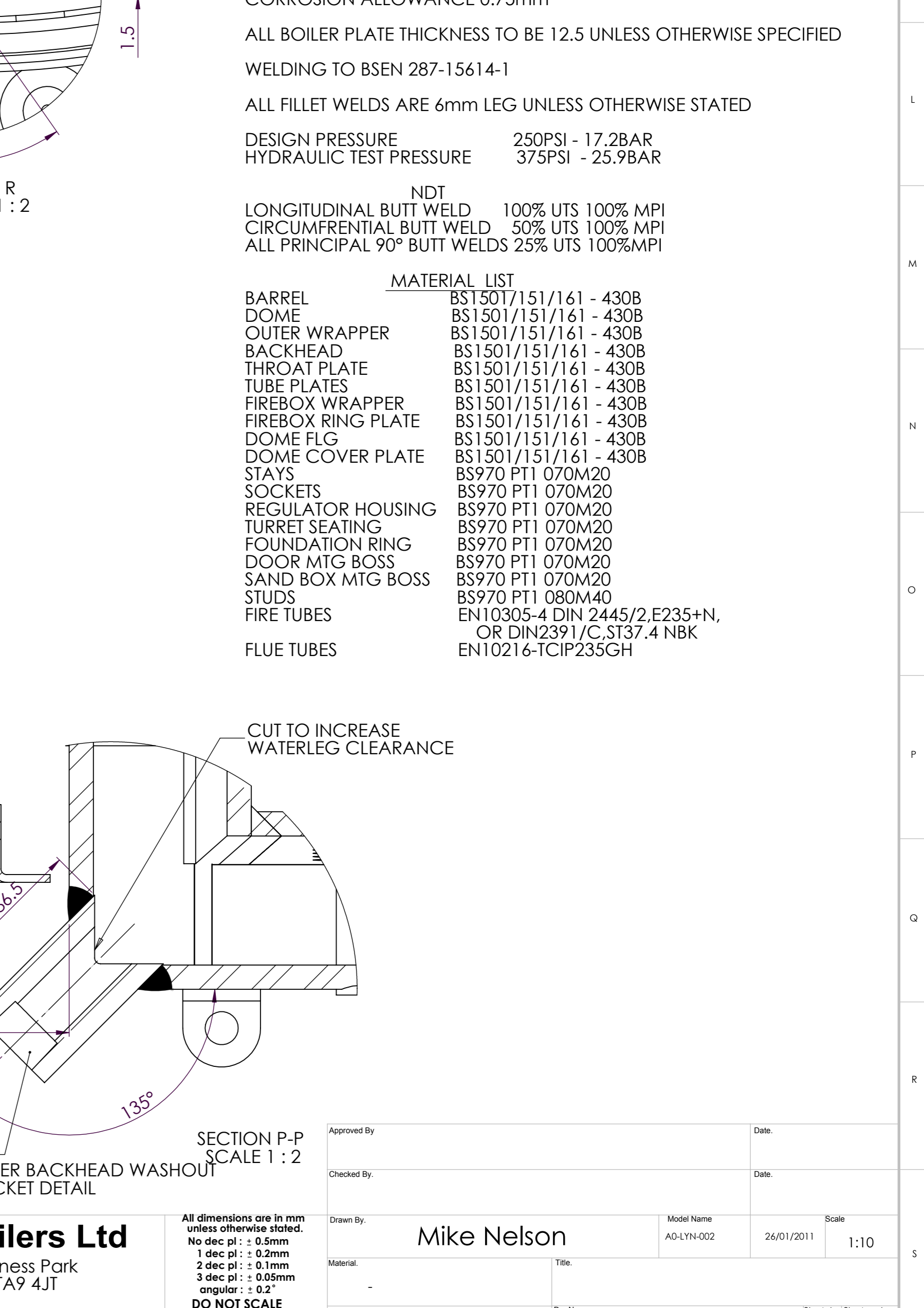
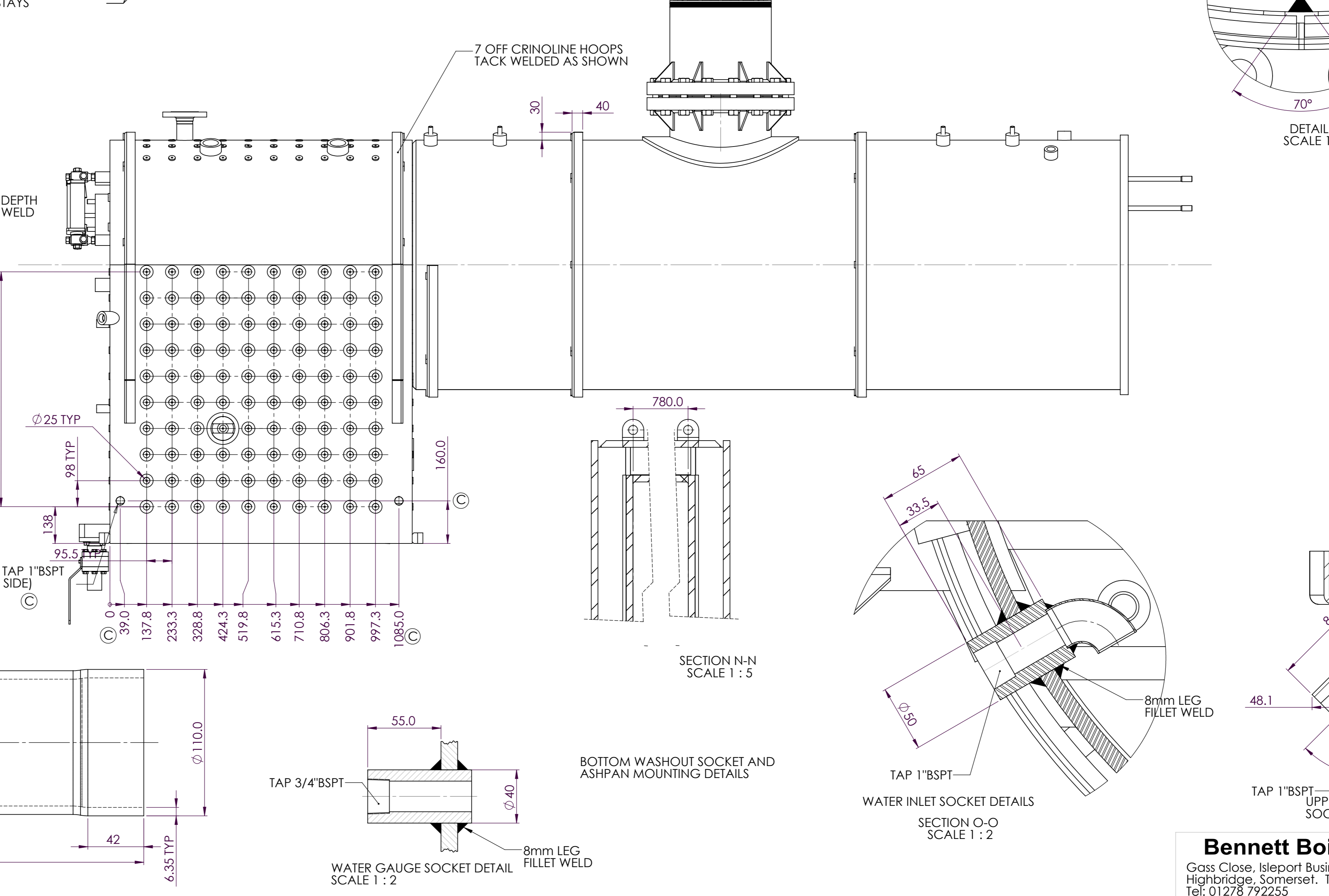
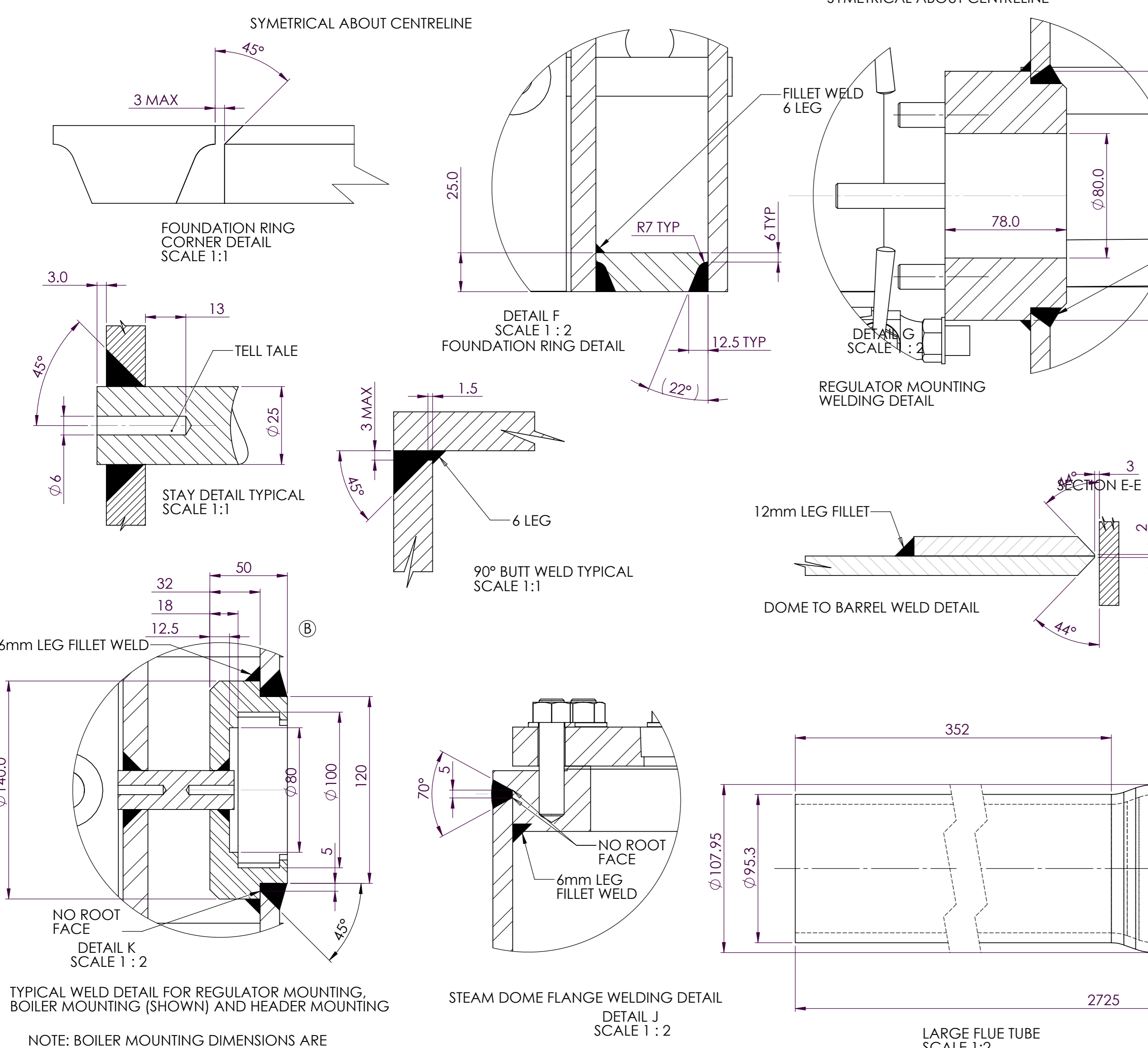
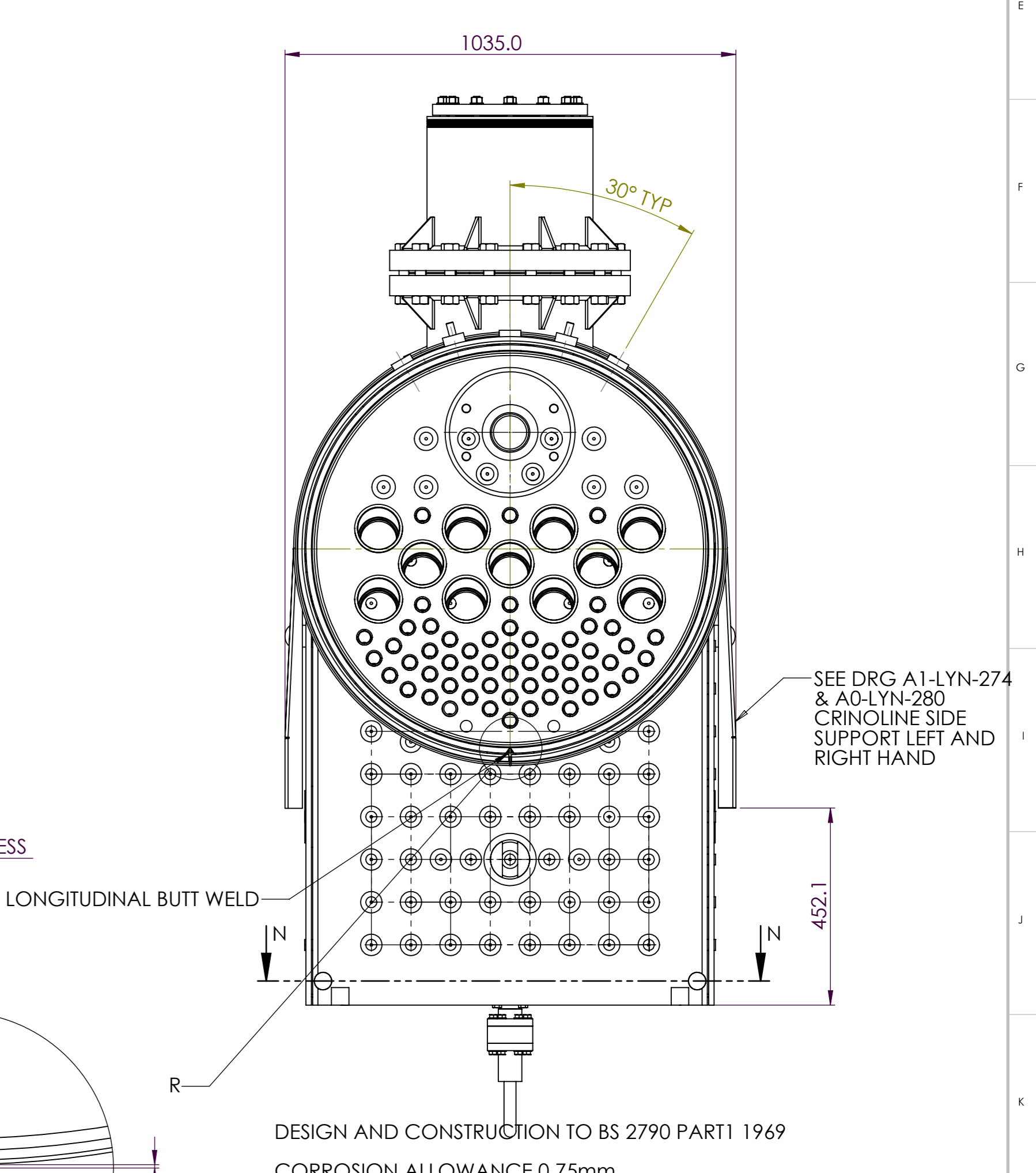
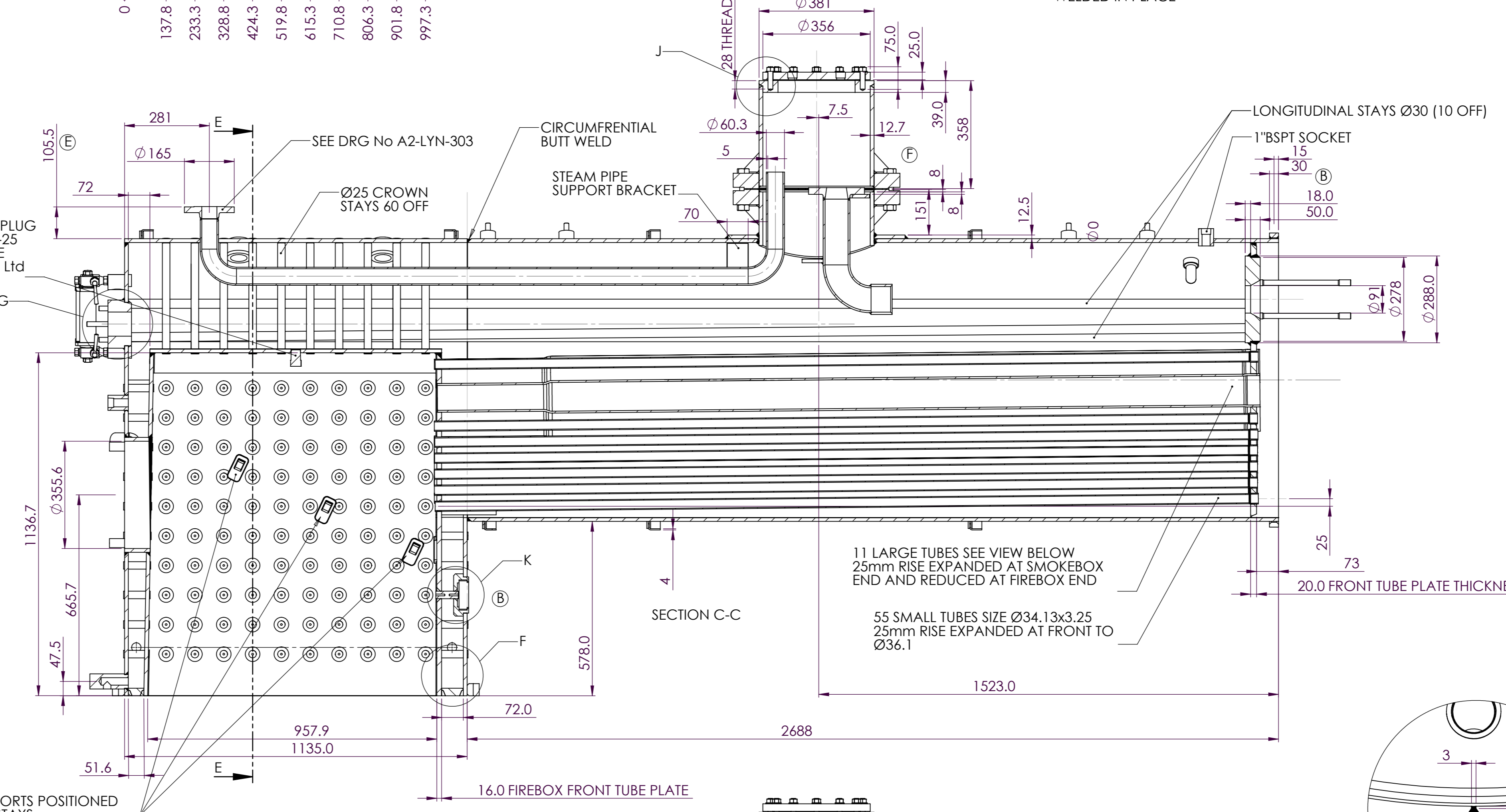
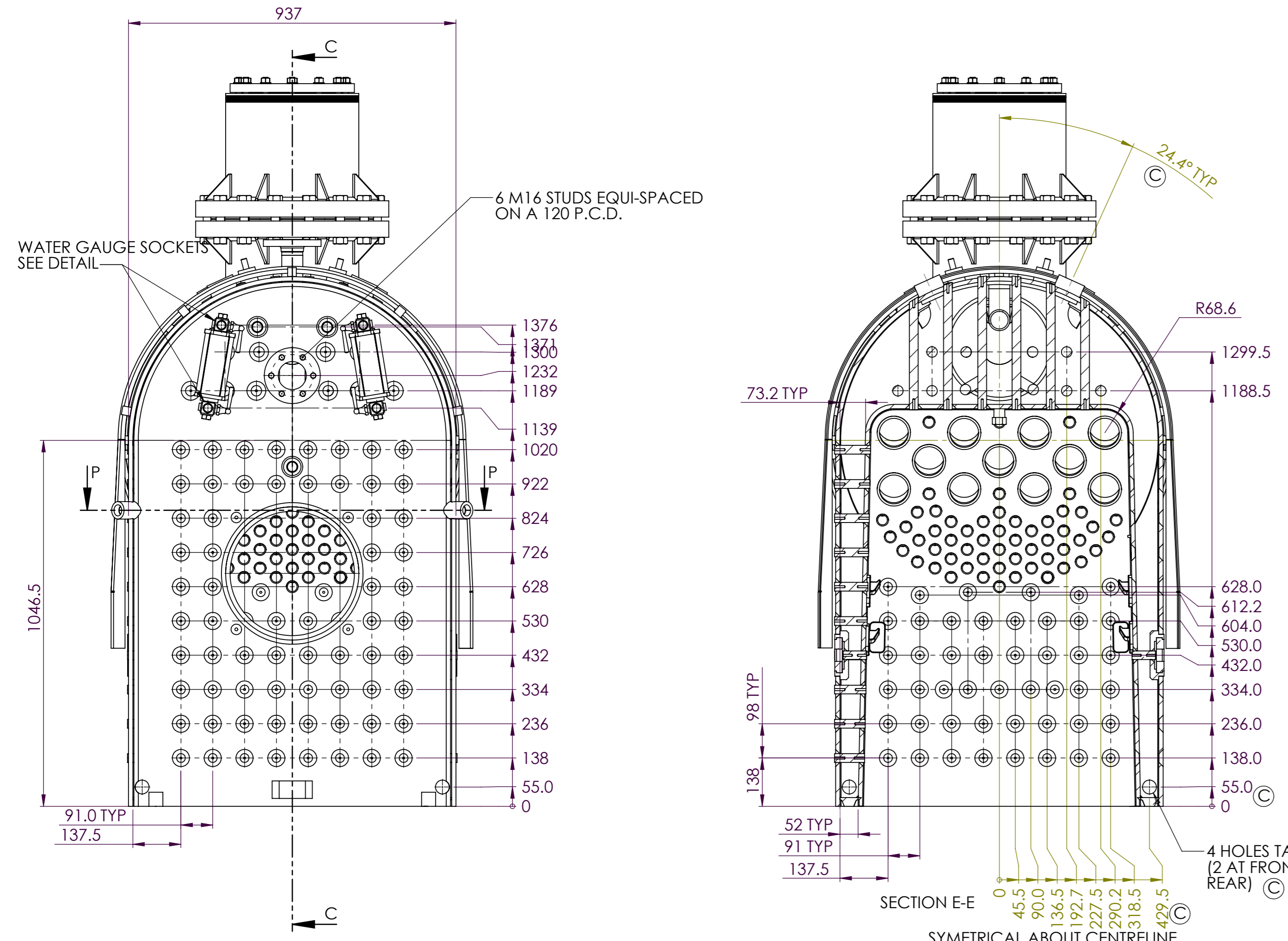
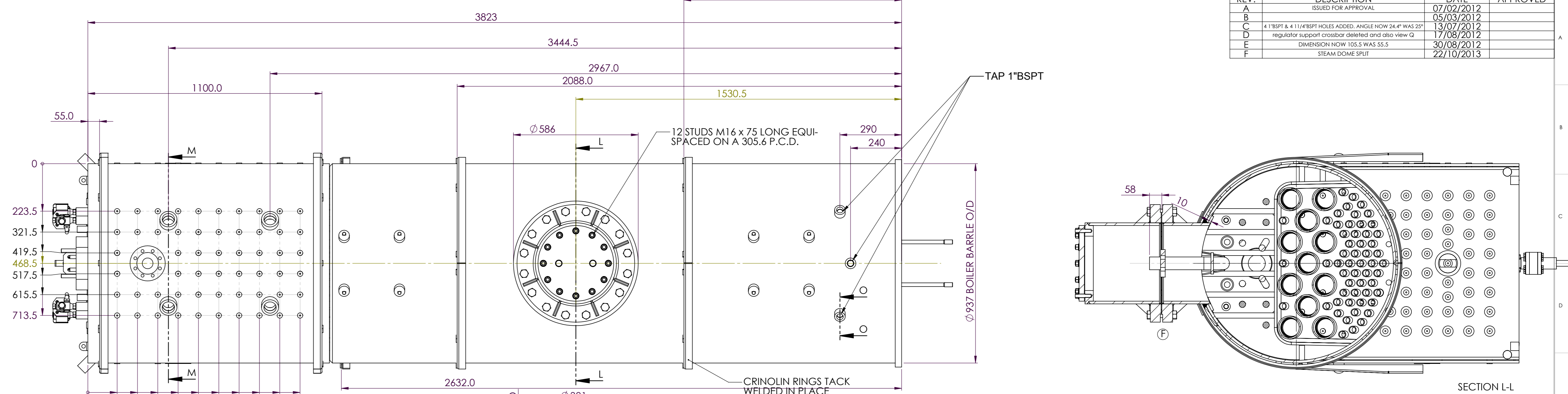
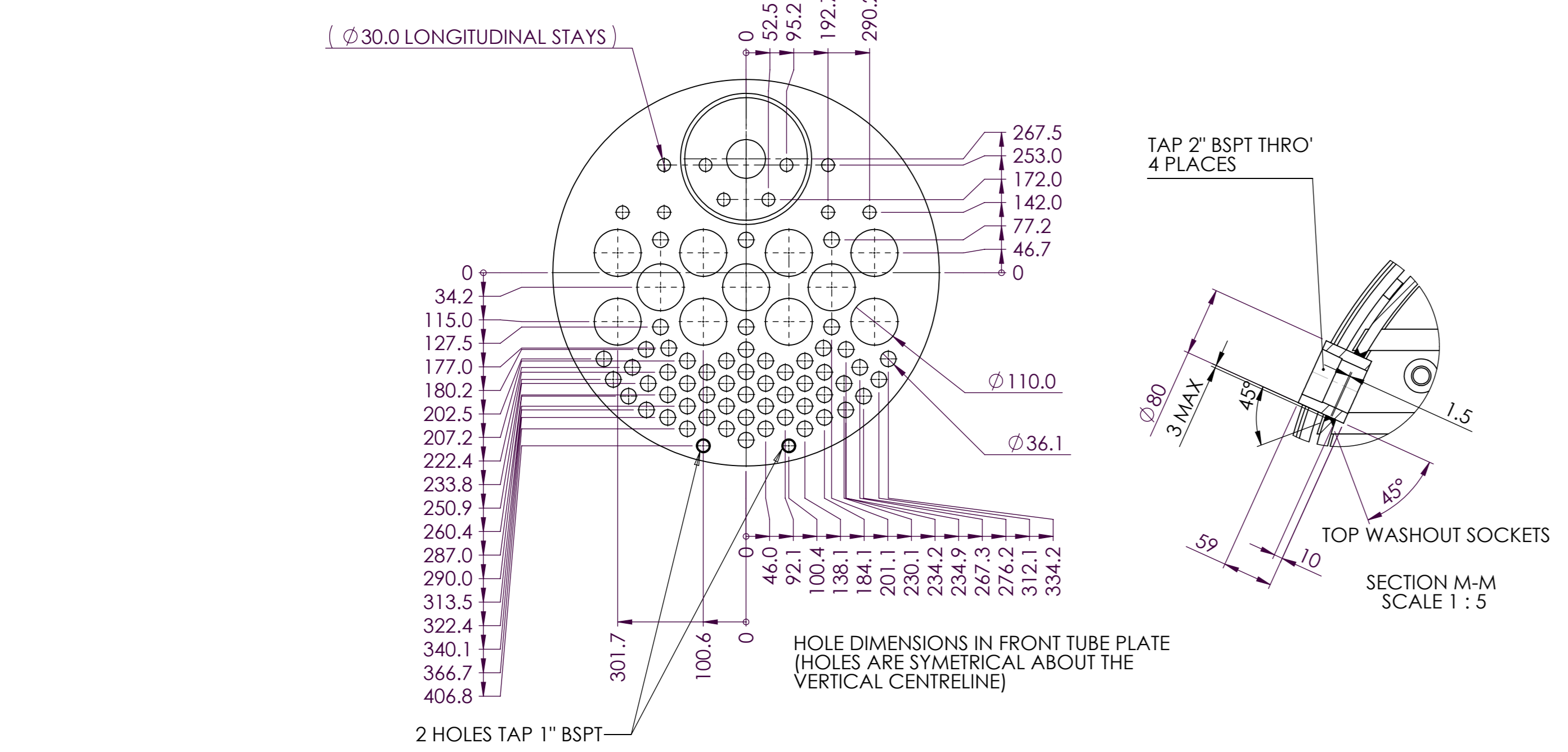


REVISIONS			
REV.	DESCRIPTION	DATE	APPROVED
A	ISSUED FOR APPROVAL	07/02/2012	
B		05/03/2012	
C	4 1" BSPT & 4 1/4" BSPT HOLES ADDED. ANGLE NOW 24° WAS 20°	13/07/2012	
D	REGULATOR SUPPORT HOLES CORRECTED. DIMENSION NOW 120 P.C.D.	17/08/2012	
E	DIMENSION NOW 105.5 WAS 55.5	30/08/2012	
F	STEAM DOME FLAT	22/10/2013	



DESIGN AND CONSTRUCTION TO BS 2790 PART 1 1969  
CORROSION ALLOWANCE 0.75mm  
ALL BOILER PLATE THICKNESS TO BE 12.5 UNLESS OTHERWISE SPECIFIED WELDING TO BSEN 287-15614-1  
ALL FILLET WELDS ARE 6mm LEG UNLESS OTHERWISE STATED  
DESIGN PRESSURE 250PSI - 17.2BAR  
HYDRAULIC TEST PRESSURE 375PSI - 25.9BAR

NDT  
LONGITUDINAL BUTT WELD 100% UTS 100% MPI  
CIRCUMFERENTIAL BUTT WELD 50% UTS 100% MPI  
ALL PRINCIPAL 90° BUTT WELDS 25% UTS 100%MPI

MATERIAL LIST

BARREL	BS1501/151/161 - 430B
DOME	BS1501/151/161 - 430B
OUTER WRAPPER	BS1501/151/161 - 430B
BACKHEAD	BS1501/151/161 - 430B
THROAT PLATE	BS1501/151/161 - 430B
TUBE PLATES	BS1501/151/161 - 430B
FIREBOX WRAPPER	BS1501/151/161 - 430B
FIREBOX RING PLATE	BS1501/151/161 - 430B
DOME FLG	BS1501/151/161 - 430B
DOME COVER PLATE	BS1501/151/161 - 430B
STAYS	BS970 PT1 070M20
SOCKETS	BS970 PT1 070M20
REGULATOR HOUSING	BS970 PT1 070M20
TURRET SEATING	BS970 PT1 070M20
FOUNDATION RING	BS970 PT1 070M20
DOOR MTG BOSS	BS970 PT1 070M20
SAND BOX MTG BOSS	BS970 PT1 070M20
STUDS	BS970 PT1 080M40
FIRE TUBES	EN10305-4 DIN 2445/2 E235+N OR DIN2391/C S37.4 NBK
FLUE TUBES	EN10216-TCIP235GH

**Bennett Boilers Ltd**  
Gass Close, Isleport Business Park  
Highbridge, Somerset, TA9 4JT  
Tel: 01278 792355  
Fax: 01278 754939  
Email: enquiries@bennettboilersltd.co.uk

Approved By: Mike Nelson  
Checked By: \_\_\_\_\_  
Date: 26/01/2011  
Scale: 1:10

Material: \_\_\_\_\_  
Finish: \_\_\_\_\_  
Dwg No: A0-LYN-002  
Sheet Size/Sheet Number: A0 1 of 1

All dimensions are in mm unless otherwise stated.  
No dec pt: 0.5mm  
1 dec pt: 0.2mm  
2 dec pt: 0.1mm  
angular: 0.2  
DO NOT SCALE

3rd Angle

WEIGHT = 2985.77 kg